

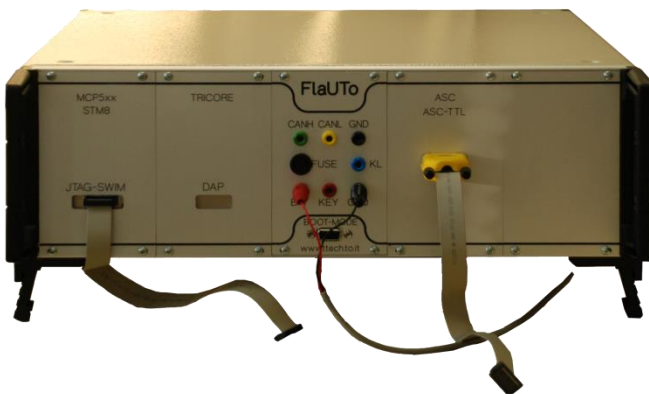


## FLAshing Universal TOol for ECU flashing and testing

**FlaUTo is the solution for automatic software flashing end testing. FlaUTo is a unique instrument for programming and debug of single and multiprocessor ECUs and for low power digital, analog and communication testing.**

### MAIN FEATURES:

- ◉ Single power supply 220Vac
- ◉ Host ethernet connection
- ◉ Multiple communication BUS
- ◉ Multiple processors (and multicore) flashing support
- ◉ JTAG, SWIM, DAP, CAN, and serial flashing
- ◉ Multi-windows software user interface
- ◉ Communication protocols test
- ◉ Easy to configure testing sequence
- ◉ Debug section for easy trouble-shooting
- ◉ Suitable for return form market in-depth ECU analysis
- ◉ Ready to be introduced in production line



### TECHNICAL SPECIFICATIONS

Specification	Description	Notes
Host communication	Ethernet	
Digital I/O	8 digital input 24 digital output	Insulated (on level: 5-30V) Max. current 2A
Flashing BUS	JTAG, DAP, SWIM, Serial, Kline, CAN	
Communication BUS	CAN, LIN, Kline, Serial, TTL Tx/Rx	
Power	Voltage : 230 V AC- 50 Hz	Power consumption : 250 W
Dimensions	WxHxD : 430 x 160 x 400 mm	



## FLEXIBILITY and MODULARITY

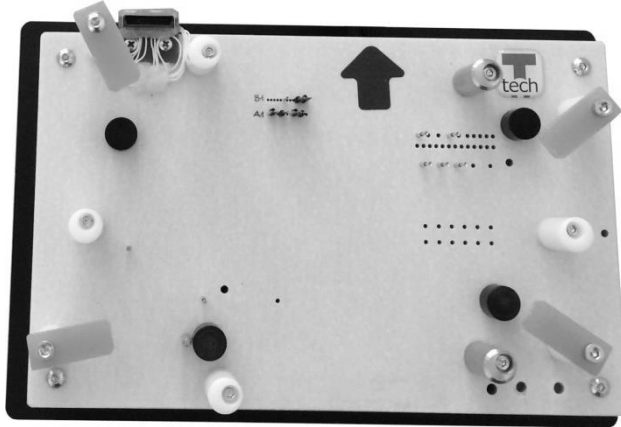
FlaUTo is the ultimate solution for ECU flashing with many algorithm support and communication tests.

FlaUTo supports a wide list of microprocessors, interfaces and algorithms.

FlaUTo's easy and modular operator interface and the debug capabilities offer quick setup and troubleshooting. In addition easy configuration files allows flexible adaptation to production changes.

## APPLICATIONS

- ⊙ ECU Flashing systems
- ⊙ ECU reconfiguration
- ⊙ On-board programming systems
- ⊙ Tool for resident, off-site technician



## SUPPORTED MICROPROCESSORS

Manufacturer	Families	Processors
	C, XC, Tricore	C166xx, XC166, XE166, XC2000, XC27xx SDA6000 TC1xxx, TC21x, TC22x, TC23x, TC24x, TC26x, TC27x, TC29x *
	ST, STM	ST10, ST30F77 STM8 STM32 On-Chip Flash
	Power-PC ColdFire ARM	PPC440, PPC460EX, PPC460GT MPC55xx, MPC56xx, SPC56xx, Qorivva MPC55xx/56xx, MPC8xxx ColdFire V2/V3/V4 Kinetic ARM(including L-series) MC56F80xx, MC56F82xx, MC56F83xx, MC56F84xx, MAC7xxxARM
		JDP Lavaredo, JDP Lucian, JDP Mc Kinley, JDP K2, JDP Matterhorn *
	ARM7, ARM9, ARM11 Cortex Xscale	ADuC70xx, AT91Mx, AT91SAMx, AT91RM9200 * Cortex-M3 families, Cortex-A8 OMAP35xx NET+ARM NS7500 LH7A400N0x, LH7A404N0x LPC2xxx, LPC3xxx STR7xx, ST30F77xx, STR91x TMS470, MAC71xx, MAC72xx i.MX1, i.MX21, i.MX25, i.MX31 Xscale IXP4x, PXA255/27xx
	SH-2A	SH7251, SH7254