



Calibration & End-Of-Line station for Actuator Position Sensors

APS.Eol is an industrial solution for the production of Automotive Actuator Position Sensors (Throttle bodies, Pedals, EGR/Turbo actuators, etc.) that achieves the functions of Sensor calibration and Actuator EOL test.



MAIN FEATURES:

- ⦿ Wide range power supply 110÷230Vac 50-60Hz
- ⦿ Sensor Calibration cycle <10sec,
Full cycle (Calibration + EOL) <40sec
- ⦿ Angular resolution 0.001°
- ⦿ Sensor Output measurement accuracy 0.2%
- ⦿ Actuator control: Constant speed, Target position,
Constant PWM, Sweep PWM
- ⦿ Return time measure from specific angles
- ⦿ Optional Torque measurement with hysteresis cycle
- ⦿ Optional Intake pressure test for TB up to -800mBar
- ⦿ Testing sequence easy to configure
- ⦿ Debug section for easy trouble-shooting
- ⦿ Integrated database for production traceability
- ⦿ Optional PLC connection for automatic lines

TECHNICAL SPECIFICATIONS

Specification	Description	Note
CycleTime	< 40sec	without handling
Measure Accuracy	Sensor Output	0.2%
Encoder resolution	Angular	0,001°
PLC connection	Siemens STEP 7	Ethernet TCP/IP
Power Air	Voltage : 110÷230V AC 50-60 Hz 6 Bar	Low power consumption <1kW
Dimensions	WxHxD : 600 x 1800 x 900 mm	

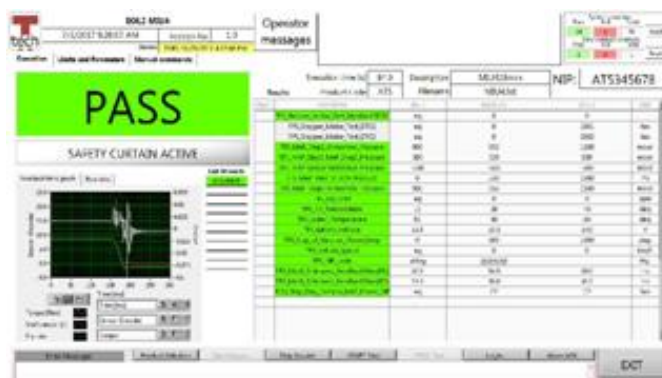


FLEXIBILITY AND MODULARITY

APS.Eol is an integrated solution to perform the sensor calibration and End Of Line test on Drive by Wire automotive components.

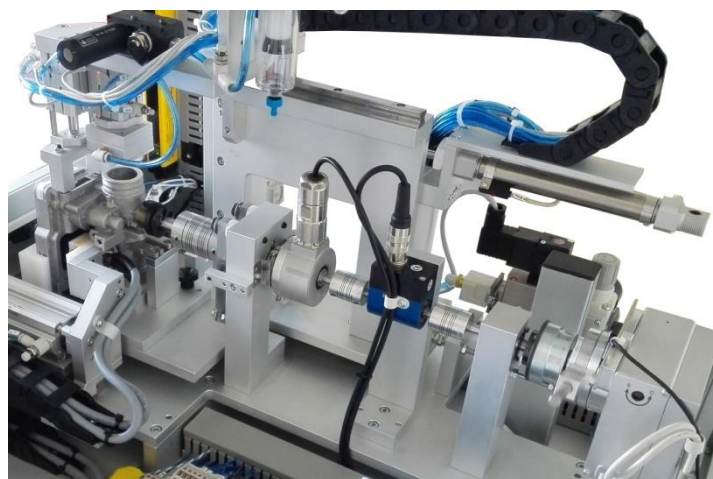
APS.Eol can be scaled on customer needs to achieve the performance suitable for the application. Moreover with its reconfigurable and customizable test sequences the system can support different product configurations. The changeable positioning allows a flexible, fast and reliable reconfiguration of the station to different product models.

APS.Eol has an integrated data collection based on database that grants the full traceability of each part calibrated and tested on the station. Its easy to operate multilanguage interface and debug capabilities offer quick setup and trouble-shooting.



APPLICATIONS

- ⊙ Throttle Bodies
- ⊙ Turbo Actuators
- ⊙ EGR Actuators
- ⊙ Pedals
- ⊙ Motorcycles DBW Commands
- ⊙ Angular position sensors



CONFIGURATION AND OPTIONS

Product code			Description
APS.Eol.A-B-C	A	Sensor Programming	
	B	Torque Measurement	
	C	Intake PressureTest	
	A	AL AM HE ME MI NX	ALLEGRO AMS HELLA MELEXIS MICRONAS NXP
	B	N 5	NO Torque Measurement With Torque Measurement Max Torque 0.5Nm; Accuracy 0.1%
	C	N P	NO Pressure Test With Pressure Test Max Vacuum -800mBar; Accuracy ±2%